

# ASSEMBLY AND INSTALLATION INSTRUCTIONS

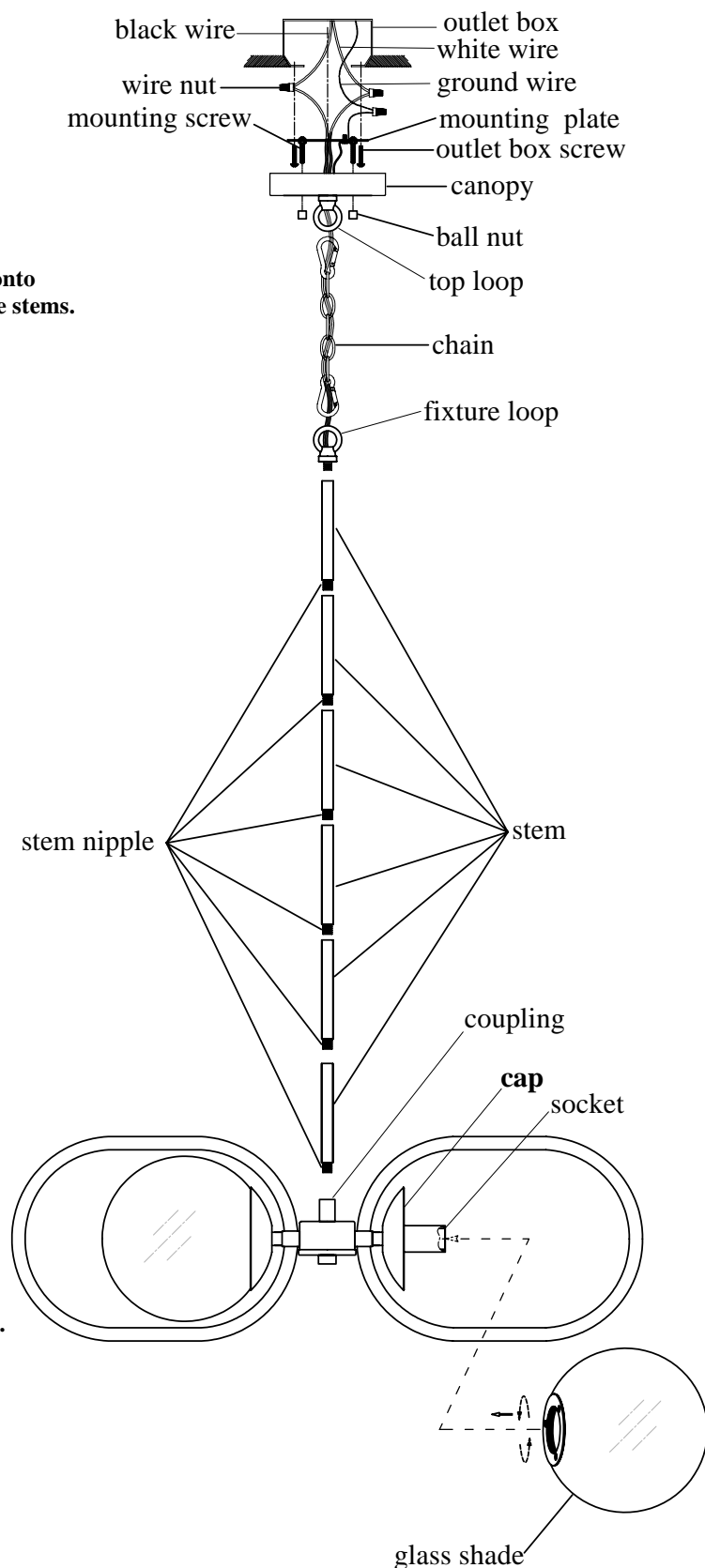
## WARNING:

TO AVOID RISK OF ELECTRICAL SHOCK, BE SURE TO SHUT OFF  
POWER WHILE INSTALLING OR SERVICING THIS FIXTURE.

NOTE: Before installing, consult local electrical codes for wiring and grounding requirement.

1. Thread the mounting screws into the provided holes of the mounting plate.
2. Thread the hex nuts onto the mounting screws.
3. Attach the mounting plate to outlet box using 2 outlet box screws upwards.
4. Thread one stem onto the coupling, thread one stem nipple onto one stem and then thread the stem with nipple into top of the stems.
5. Feed fixture wires and ground wire through the stem and stem nipple.
6. Thread the other stem nipple onto the other stem and thread them onto top of the stem.
7. Repeat step 4 and step 6 until all desired stems are connected, then thread the fixture loop onto top of the stems.
8. Hook chain link onto the fixture loop and the top loop and hang the chain to the top loop and the fixture loop.
9. Weave fixture wires and ground wire through the fixture loop, ever other chain links, top loop, top nut , canopy and nipple and then secure the top loop to the nipple.
10. Make wire connections:
  - Attach ground wire to house ground wire using a wire nut or attach them to the cross bar with a green ground screw.
  - Attach white wire from light to white wire from power source with a wire nut.
  - Attach black wire from light to black wire from power source with a wire nut.

Observing: positive wire with positive wire, negative wire with negative wire, ground wire
11. Tuck the wire connections neatly into the outlet box.
12. Attach the canopy to the ceiling, and secure it with ball nut .
13. Install the stem into the coupling .
14. Put the glass shade onto the socket and secure it by the cap.
15. Turn on the power at fuse or circuit box.



6137-3-80/62  
6137-6-80/62