

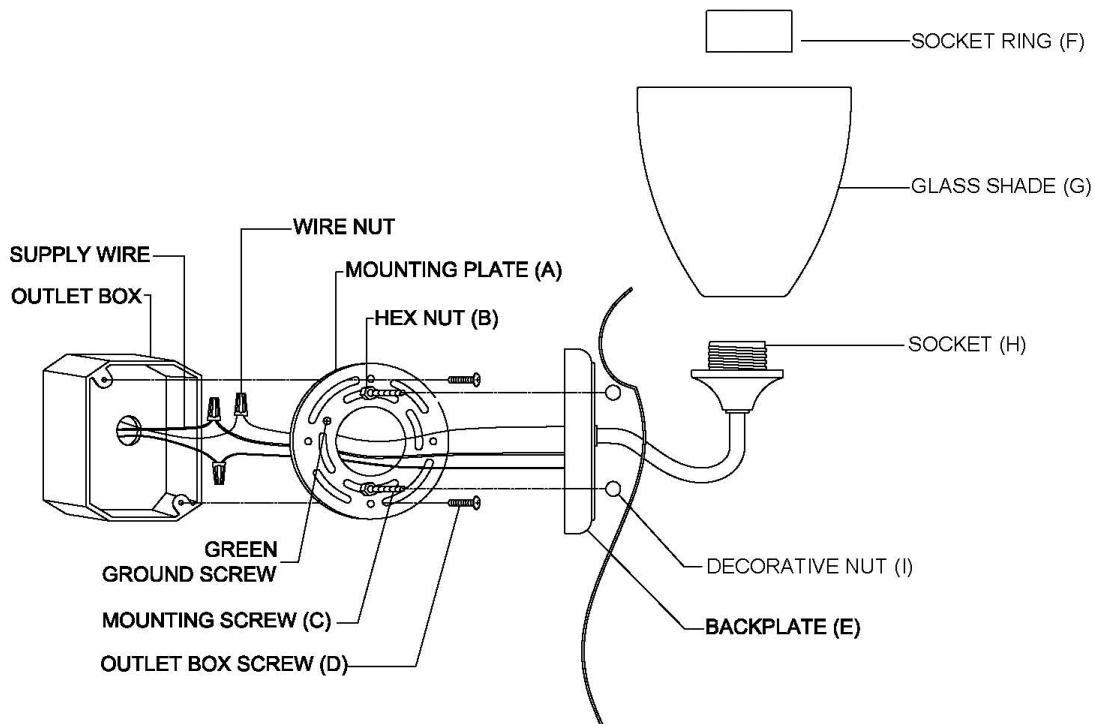
# ASSEMBLY AND INSTALLATION INSTRUCTIONS

TO AVOID RISK OF ELECTRICAL SHOCK, BE SURE TO SHUT OFF  
**WARNING:** POWER WHILE INSTALLING OR SERVICING THIS FIXTURE.

**NOTE:** Before installing, consult local electrical codes for wiring and grounding requirement.

## Installation Steps.

1. Attach the MOUNTING PLATE (A) to the outlet box using 2 OUTLET BOX SCREWS (D).
2. Make wire connections :
  - Attach the ground wire to house ground wire using a wire nut.
  - (Or attach them to the MOUNTING PLATE (A) with a green ground screw.)
  - Attach white wire from light to white wire from power source with a wire nut.
  - Attach black wire from light to black wire from power source with a wire nut.
3. Attach the BACKPLATE (E) to MOUNTING PLATE (A) by using a DECORATIVE NUT (I).
4. Secure the GLASS SHADE (G) to the SOCKET (H) by tightening the SOCKET RING (F).
5. Install bulbs. (Please do not exceed the maximum capacity which is recommended on the fixture.)
6. Turn power on at fuse or circuit box.



#5427-1-265

#5427-1-286