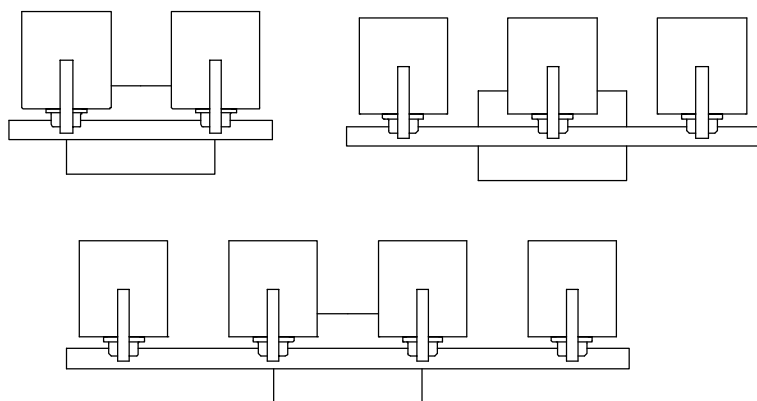
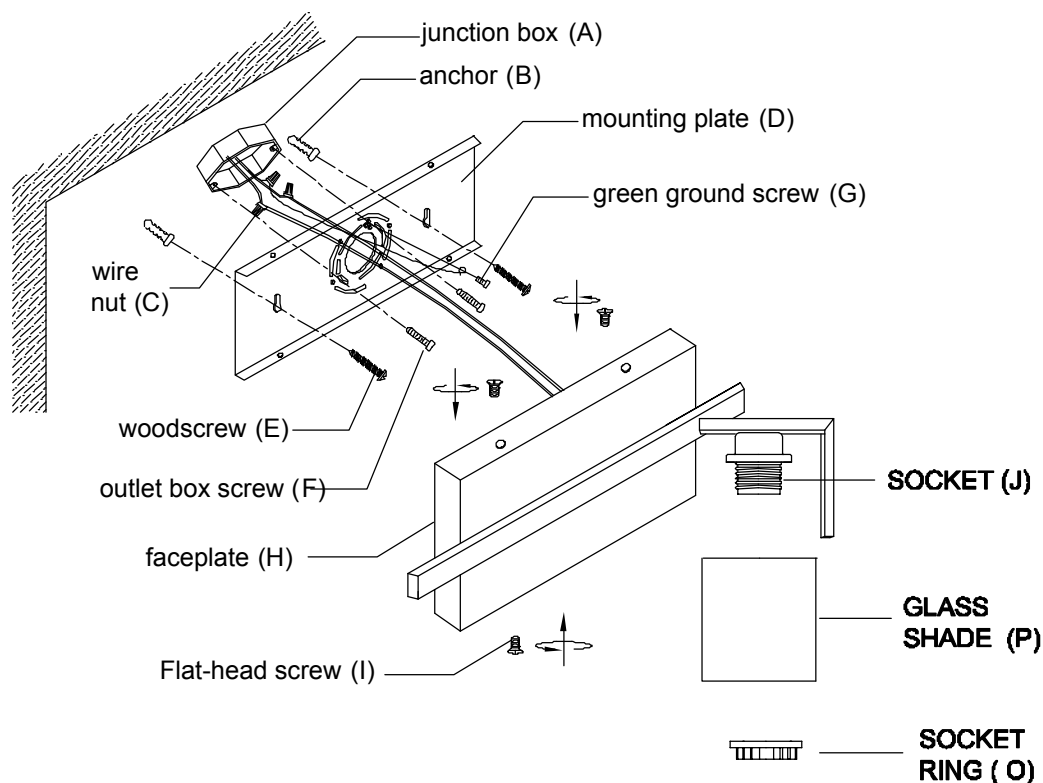


# ASSEMBLY AND INSTALLATION INSTRUCTIONS

**WARNING:** TO AVOID RISK OF ELECTRICAL SHOCK , BE SURE TO SHUT OFF POWER WHILE INSTALLING OR SERVICING THIS FIXTURE .

**NOTE :** Before installing ,consult local electrical codes for wiring and grounding requirement

1. Drill 2pcs holes on the wall according to the 2pcs marks, and put the 2pcs Anchors (B) into the wall.
2. Carefully split the fixture wires (White Neutral Wire / Black Hot Wire / Ground Wire).
3. Attach ground supply circuit wire and ground fixture wires together with wire nut (C), then put the ground wire on mounting plate (D) installed by the green ground screw (G). Never connect ground wire to black or white power supply wires. Twist stripped wire ends of fixture and supply circuit wires together black to black or red (hot) and white to white (neutral). Then twist the wire nuts (C). Tape wire nuts and wires together. Carefully tuck connected wires and wire nuts into outlet box.
4. Place the mounting plate (D). Align holes in mounting plate (D) with holes in junction box (A) (not included) and attach with outlet box screw (F) as shown.
5. Place the mounting plate (D). Align holes in mounting plate (D) with holes in the Anchors (B) and attach with wood screws (E) as shown.
6. Secure the faceplate (H) with Flat-head screws (I) to tighten.
7. Put glass shade ( P ) over the socket ( O ) and secure it with socket ring ( J ).
8. Install buib.(not included) (please do not exceed the maximum capacity which is recommended on the fixture).
9. Turn on the power at fuse or cicuit box.



# 5190-1-XX  
 # 5190-2-XX  
 # 5190-3-XX  
 # 5190-4-XX